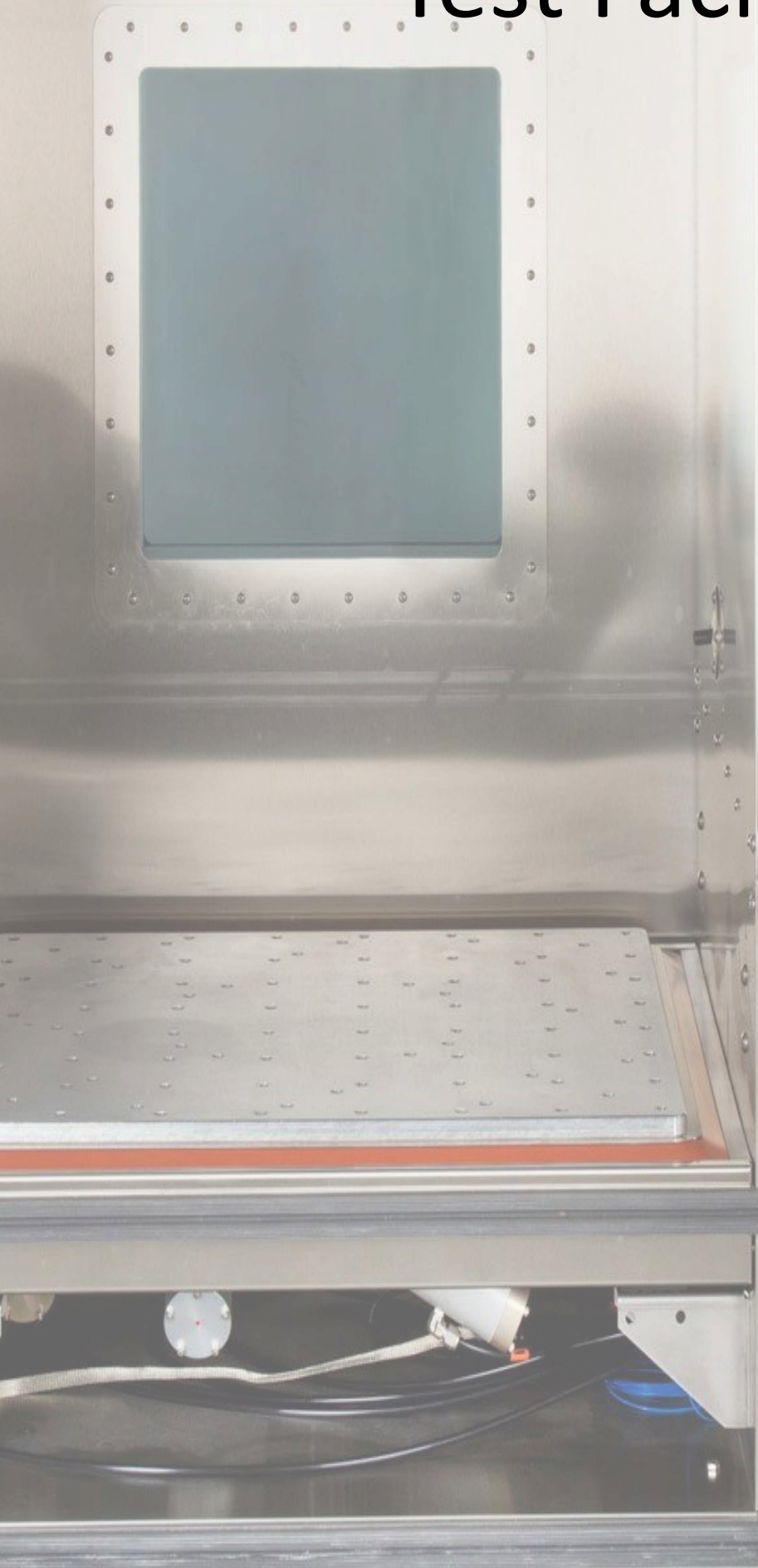


# Test Facilities



## HALT and HASS

### Key Features

*The Typhoon 2.5 is a popular chamber with a 30" x 30" vibration table. This table size is a good size for Highly Accelerated Life Testing (HALT) applications and many Highly Accelerated Stress Screening (HASS) applications. The table can be mounted in an upper or lower position, to suit different product and ergonomic requirements.*

- Table Size 762 x 762mm
- Table Capacity 145kg
- Actuators 8 Pneumatic, impulse-type, lubrication-free actuators
- Vibration Six degree of freedom, random, OmniAxial™ broadband excitation
- Acceleration 5–75 gRMS typical
- Temperature Range +200°C to –100°C
- Thermal Ramp Rate 70°C–100°C/min average
- Heating System Open-element nichrome type
- Cooling System Vacuum jacketed liquid nitrogen injection



*Extensively used in aviation and automotive*

## Environmental Chambers

An environmental test chamber artificially replicates conditions which machinery, materials, devices or components might be exposed to. It is also used to accelerate the effects of exposure to the environment, sometimes at conditions not actually expected.

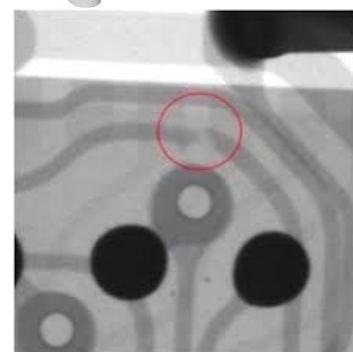
- Capacity *224 litres*
- Temperature Range *-40°C TO 180°C*
- Relative Humidity Range *From 10% to 98% (in 5°C to 95°C)*
- Dewpoint Range *2°C to 94°C for continuous test*



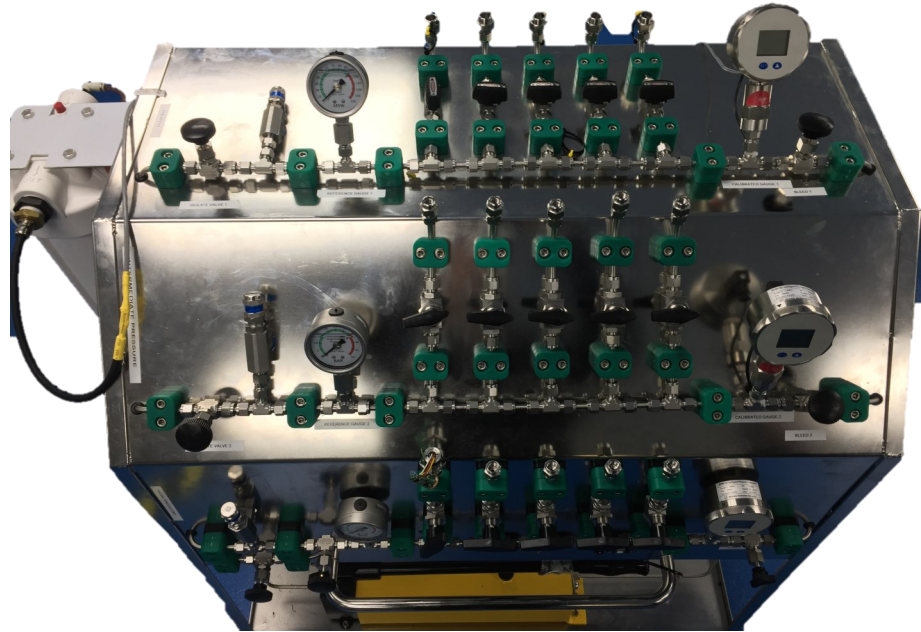
## X Ray

Real-time X-ray technology is the most effective method for detecting PCB faults around miniature components. Although ordinary vision systems are widely used, the observed parts often have connections that can be hidden from view. Moreover, X-ray methods also help verify the process and test the product.

X-ray inspection systems display grayscale images which represent variations in the shape and thickness of an object. High-density parts produce darker images than less dense or thinner parts. Automated inspection algorithms analyse these grayscale images of soldered features to show acceptable or unacceptable joints. This eliminates questionable human interpretations of quality.



## Multi-Stage Pressure Tester



Custom designed and manufactured test rig to simulate low/mid/high pressures that are experienced at various depths of water.

### OUR QUALITY POLICY

*Nautech Electronics is committed to the identification and implementation of continuous improvement that shall establish the basis for ongoing development of all company operations and the Quality Management System.*

*IPC 610 Class 3, ISO9001:2015 Certified.*

### OUR QUALITY OBJECTIVES

*Provide high quality products and services on time at reasonable costs.*

*Manage the products and processes to provide high customer satisfaction.*



Quality  
ISO 9001

#### Manufactured and distributed by:

Nautech Electronics Ltd  
120 Cryers Road  
East Tamaki  
AUCKLAND 2013  
Phone: (+64) 9 273 2001

#### Distributed in Australia by:

VEHiQA  
41B Charles Ulm Place  
Eagle Farm  
QUEENSLAND 4009  
Phone: (+61) 7 3245 6514